

CALENDAR ITEM

C49

A 37

10/16/15
PRC 1431.9
PRC 7343.9
K. Foster

**RESCISSION OF APPROVAL OF A GENERAL LEASE – PUBLIC AGENCY USE;
TERMINATION OF A GENERAL LEASE – PUBLIC AGENCY USE; ISSUANCE OF A
GENERAL LEASE – PUBLIC AGENCY USE; AND
APPROVAL OF A SUBLEASE**

APPLICANT:

County of Santa Barbara -
Parks Department
610 Mission Canyon Road
Santa Barbara, CA 93105

LAND TYPE AND LOCATION:

Sovereign land in the Pacific Ocean, Goleta Slough, and Tecolotito Creek at
Goleta Beach County Park, near the City of Goleta, Santa Barbara County.

AUTHORIZED USE:

Use and maintenance of a public recreational park including an existing public
recreational pier, public facilities, and protective structures; the demolition of an
existing vehicular access bridge; and the construction, use, and maintenance of
a new vehicular access bridge and culvert.

LEASE TERM:

20 years, beginning July 1, 2015.

CONSIDERATION:

Public use, benefit, health and safety; subject to modification as described in the
lease.

SPECIFIC LEASE PROVISIONS:

1. The consideration for this Lease is the public use, benefit, health and
safety. However, for any annual reporting period, if the amount of annual
gross income derived from activities on the Lease Premises exceeds
expenses for operation and maintenance of the same or if there is no
longer a use and benefit to the public, Lessee shall pay Lessor annual rent

CALENDAR ITEM NO. **C49** (CONT'D)

in the amount of five (5) percent of the annual gross income generated by all activities on the Lease Premises.

2. Lessee shall establish a separate trust fund or funds for the deposit of all revenues generated on the Lease Premises, and for the payment of expenses. Any money remaining in the trust fund or funds, at the termination of this Lease shall be transferred to the State Lands Commission no later than 90 days after termination.
3. In conducting the bridge replacement project, the Lessee shall make a good-faith effort to remove all improvements associated with the existing bridge to be demolished, including all abutments, piles and footings, in their entirety. Any piles or other improvements that such good-faith effort demonstrates cannot be reasonably or feasibly removed in their entirety at this time shall be cut off at a minimum depth of five (5) feet below the existing mud line. Lessee shall immediately notify Lessor in writing should Lessee be unable to completely remove any bridge improvements. Notification shall include a written narrative of the removal efforts, the conditions prohibiting such removal, and a general description of the improvements not removed. Lessee shall, at its sole risk and expense, remove any or all portions of any remaining bridge improvements if Lessor at any time determines such improvements to be adverse to the public interest.
4. Upon removal of all existing bridge improvements, Lessee agrees to submit an application for Commission review and approval for a Lease Amendment to remove from the Lease Premises that portion of the existing bridge right-of-way described as Parcel 4B in Exhibit A – Land Description, and to submit for Lessor staff's review and acceptance a Quitclaim Deed relinquishing any right, title, or interest Lessee may possess with respect to Parcel 4B.

BACKGROUND INFORMATION:

Goleta Beach County Park (Park) is a public park located in the county of Santa Barbara at the mouth of Goleta Slough and the Pacific Ocean near the cities of Goleta and Santa Barbara and the University of California, Santa Barbara. The Park contains various improvements, including an approximately 1,500-foot long public recreational pier and ancillary improvements including a boat launch and restrooms, park ranger facilities, a restaurant, restrooms, parking, picnic areas, and various rock riprap shoreline protective structures or revetments. The public pier and ancillary improvements have been previously authorized by the Commission under Lease No. PRC 1431.9, which expired on June 30, 2004. A rock riprap revetment located along Goleta Slough on the north side of the Park

CALENDAR ITEM NO. **C49** (CONT'D)

has been previously authorized under Lease No. PRC 7343.9, which expired on September 30, 2009.

Historically, the seaward side of the Park has been subject to severe erosion during heavy winter storm surges. Past efforts to protect the Park's infrastructure have included placement of winter sand dikes, sand restoration projects, and rock riprap revetments. During winter storms in 2002 and 2004, sand dikes were repeatedly reconstructed. However, storm surge and wave activity caused further erosion of the parking lot and picnic area, and posed a potential risk to other public park facilities and the underground water, sewer, and gas lines that serve the Park.

Since approximately December 2002, the County has placed various rock riprap revetments under California Coastal Commission (CCC) emergency permits on the seaward side of the Park to address erosion. Retention of the various emergency rock riprap revetments was authorized by the CCC under Coastal Development Permit (CDP) No. 4-14-0687 on May 13, 2015.

Commission staff conducted a boundary study that determined that in addition to the pier and various rock riprap revetments discussed above, other Park facilities are also located on State lands. The other identified facilities include a restroom building, a small portion of the restaurant building, a portion of a paved parking area, a wildlife observation platform overlooking Goleta Slough, and the vehicular access bridge crossing Tecolotito Creek, and a nearby culvert.

In 2008, the County determined that the vehicular access bridge required stabilization due to structural degradation caused by a condition known as reactive aggregate, which is an irreversible deterioration of the concrete within the structure. The County conducted emergency repairs to temporarily stabilize the bridge, but is proposing to replace the existing bridge with a new bridge, and demolish the old structure. The new bridge would be an approximately 168-foot long, 53.5-foot wide, two span cast-in-place concrete box girder structure, with two 12-foot traffic lanes, two 4-foot wide shoulders, a 12-foot wide Class 1 bicycle path with a barrier separation from the roadway, and a 5-foot wide raised pedestrian walkway with exterior safety railing. The bridge replacement project would be conducted under the Federal Highway Administration - Highway Bridge Program, with oversight by the California Department of Transportation.

As mitigation for the bridge project, the County is proposing to replace an existing 24-inch diameter culvert that connects a County-owned parcel, located between Sandspit Road and State Route 217, with Tecolotito Creek and Goleta Slough, with a larger culvert. The larger culvert would be placed at a lower elevation to allow for tidal influence to more naturally inundate the parcel at higher tidal flows.

CALENDAR ITEM NO. **C49** (CONT'D)

OTHER PERTINENT INFORMATION:

1. Applicant owns the upland adjoining the lease premises.
2. On October 29, 1979, the Commission authorized Lease No. PRC 1431.9, a General Lease – Public Agency Use, to the County of Santa Barbara and the California Department of Fish and Game for a public recreational pier and related facilities on the pier. That lease expired on June 30, 2004.
3. On September 27, 1989, the Commission authorized Lease No. PRC 7343.9, a General Lease – Public Agency Use to the Santa Barbara County Parks Department for a rock riprap revetment located along Goleta Slough on the northern side of the Park. That lease expired on September 30, 2009.
4. To facilitate lease streamlining at Goleta Beach County Park, staff is recommending the improvements previously authorized under Lease No. PRC 7343.9 be terminated and the existing improvements occupying State-owned lands will be merged into Lease No. PRC 1431.9.
5. On February 8, 2011, the Commission authorized the issuance of a General Lease – Public Agency Use to the County of Santa Barbara for various Park improvements, including the pier, rock riprap revetments, and vehicular access bridge, among others. The lease was never executed, and staff is recommending that the prior authorization be rescinded.
6. On December 28, 1979, the County of Santa Barbara entered into a sublease with the California Department of Fish and Game, acting by and through the Wildlife Conservation Board, for purposes of a cost-sharing agreement to finance pier improvements. The sublease expires on August 19, 2019. Staff is recommending that the Commission authorize the existing sublease.
7. Rescission of lease approval and authorization of a sublease are not projects as defined by the California Environmental Quality Act (CEQA) because they are administrative actions that will not result in direct or indirect physical changes in the environment.

Authority: Public Resources Code section 21065 and California Code of Regulations, Title 14, section 15378 subdivision (b)(5).

8. **For Existing Facilities:** The staff recommends that this activity is exempt from the requirements of CEQA as a categorically exempt project. The

CALENDAR ITEM NO. **C49** (CONT'D)

project is exempt under Class 1, Existing Facilities; California Code of Regulations, Title 2, section 2905, subdivision (a)(2).

Authority: Public Resources Code section 21084 and California Code of Regulations, Title 14, section 15300 and California Code of Regulations, Title 2, section 2905.

9. **For Bridge and Culvert Construction:** A Mitigated Negative Declaration, State Clearinghouse No. 2014051081, was prepared by the County of Santa Barbara and adopted on September 16, 2014, for this project. The California State Lands Commission staff has reviewed such document.

A Mitigation Monitoring Program was adopted by the County of Santa Barbara.

10. This activity involves lands identified as possessing significant environmental values pursuant to Public Resources Code section 6370 et seq., but such activity will not affect those significant lands. Based upon the staff's consultation with the persons nominating such lands and through the CEQA review process, it is the staff's opinion that the project, as proposed, is consistent with its use classification.

APPROVALS OBTAINED:

California Coastal Commission
California Regional Water Quality Control Board

FURTHER APPROVALS REQUIRED:

California Department of Fish and Wildlife
U.S. Army Corps of Engineers

EXHIBITS:

- A. Land Description
- B. Site and Location Map
- C. Mitigation Monitoring Program

RECOMMENDED ACTION:

It is recommended that the Commission:

CEQA FINDINGS:

For Existing Facilities: Find that the activity is exempt from the requirements of CEQA pursuant to California Code of Regulations, Title 14, section 15061 as a categorically exempt project, Class 1, Existing

CALENDAR ITEM NO. **C49** (CONT'D)

Facilities; California Code of Regulations, Title 2, section 2905, subdivision (a)(2).

For Bridge and Culvert Construction: Find that a Mitigated Negative Declaration, State Clearinghouse No. 2014051081, and a Mitigation Monitoring Program were prepared by the County of Santa Barbara and adopted on September 16, 2014, for this Project and that the Commission has reviewed and considered the information contained therein.

Adopt the Mitigation Monitoring Program, as contained in Exhibit C attached hereto.

SIGNIFICANT LANDS INVENTORY FINDING:

Find that this activity is consistent with the use classification designated by the Commission for the land pursuant to Public Resources Code section 6370 et seq.

AUTHORIZATION:

1. Authorize rescission of the Commission's approval of Lease No. PRC 1431.9, a General Lease – Public Agency Use, at the February 8, 2011 meeting.
2. Authorize termination of Lease No. PRC 7343.9, a General Lease– Public Agency Use, issued on September 27, 1989, which expired on September 30, 2009.
3. Authorize issuance of a General Lease – Public Agency Use to the County of Santa Barbara beginning July 1, 2015, for a term of 20 years, for the use and maintenance of a public recreational park including an existing public recreational pier, public facilities, and protective structures; the demolition of an existing vehicular access bridge; and the construction, use, and maintenance of a new vehicular access bridge and culvert as shown on Exhibit A and as described in Exhibit B (for reference purposes only) attached and by this reference made a part hereof.
4. Approve the existing sublease from the County of Santa Barbara to the Wildlife Conservation Board.

EXHIBIT A

PRC 1431.9

Land Description

Five parcels of tide and submerged land situate in the County of Santa Barbara, State of California and described as follows:

Parcel 1

COMMENCING at USGLO monument "T4N,R28W,S20AMC" as shown on that map "Survey of the Mean High Tide Line Along the Shore of Santa Barbara Channel", dated April, 1958 filed in the office of the California State Lands Commission (CSLC), said monument having CCS 27(1958), Zone 5 coordinates Northing 338092.67 feet, Easting 1446493.53 feet, thence N 67° 23' 34" W 1337.95 feet to the POINT OF BEGINNING, N 09° 53' 16" W 5.49 feet more or less to the Ordinary High Water Mark, said water mark depicted as the CSLC January 25, 1941 Line, as shown on that map "Comparison of Areas Goleta Sand Spit", dated December 15, 1941 filed in the office the CSLC, thence along said OHWM the following thirty-four (34) courses:

- 1) S 78° 37' 40" W 28.79 feet,
- 2) S 84° 17' 37" W 18.36 feet,
- 3) S 87° 40' 46" W 45.09 feet,
- 4) S 86° 14' 41" W 19.31 feet;
- 5) S 81° 56' 33" W 24.60 feet,
- 6) S 78° 15' 50" W 20.94 feet,
- 7) S 79° 42' 11" W 15.88 feet,
- 8) S 78° 07' 18" W 11.82 feet,
- 9) S 77° 00' 34" W 111.78 feet,
- 10) S 75° 51' 56" W 106.20 feet,
- 11) S 79° 47' 24" W 58.90 feet,
- 12) S 80° 19' 44" W 32.56 feet,
- 13) S 77° 57' 29" W 22.64 feet,
- 14) S 77° 05' 51" W 43.87 feet,
- 15) S 75° 32' 12" W 102.52 feet,
- 16) S 70° 36' 13" W 27.69 feet,
- 17) S 75° 17' 33" W 30.35 feet,
- 18) S 71° 46' 30" W 23.05 feet,
- 19) S 82° 57' 19" W 11.26 feet,
- 20) S 66° 26' 33" W 14.93 feet,
- 21) S 75° 58' 29" W 14.36 feet,
- 22) S 83° 39' 50" W 11.26 feet,
- 23) S 74° 31' 15" W 116.43 feet
- 24) S 72° 21' 12" W 58.22 feet,
- 25) S 72° 37' 01" W 18.76 feet,

26) S 72° 47' 00" W 41.15 feet,
27) S 66° 25' 23" W 94.46 feet,
28) S 62° 47' 05" W 19.02 feet,
29) S 65° 29' 37" W 43.75 feet,
30) S 52° 31' 12" W 13.48 feet,
31) S 41° 50' 42" W 19.02 feet,
32) S 25° 20' 36" W 15.05 feet,
33) S 09° 05' 53" W 15.66 feet and
34) S 18° 27' 08" E 15.42 feet;
thence leaving said OIWM, the following twenty-three (23) courses:
1) N 53° 47' 45" E 60.75 feet,
2) N 69° 57' 17" E 54.46 feet,
3) N 58° 29' 58" E 55.41 feet,
4) N 68° 52' 56" E 50.90 feet,
5) N 59° 48' 21" E 55.32 feet,
6) N 63° 26' 37" E 50.19 feet,
7) N 67° 58' 30" E 53.29 feet,
8) N 77° 06' 40" E 53.76 feet,
9) N 65° 16' 39" E 54.34 feet,
10) N 80° 25' 56" E 50.54 feet,
11) N 65° 58' 31" E 52.97 feet,
12) N 80° 43' 57" E 94.41 feet,
13) N 80° 53' 51" E 49.95 feet,
14) N 82° 10' 00" E 50.71 feet,
15) N 71° 24' 41" E 52.46 feet,
16) N 71° 40' 18" E 50.78 feet,
17) N 74° 45' 55" E 51.30 feet,
18) N 83° 00' 48" E 47.70 feet,
19) N 80° 53' 43" E 49.21 feet,
20) N 85° 14' 04" E 51.44 feet,
21) N 79° 50' 12" E 54.94 feet,
22) N 78° 06' 07" E 46.55 feet and
23) N 80° 06' 44" E 49.67 feet to the POINT OF BEGINNING.
Containing 17576.03 square feet more or less.

EXCEPTING THEREFROM any portion lying landward of the Ordinary High Water Mark.

Parcel 2

COMMENCING at USGLO monument "T4N,R28W,S20AMC" as shown on that map "Survey of the Mean High Tide Line Along the Shore of Santa Barbara Channel", dated April, 1958 filed in the office of the California State Lands Commission (CSLC), said monument having CCS 27(1958), Zone 5 coordinates Northing 338092.67 feet, Easting 1446493.53 feet, thence N 73° 21' 21" W

2135.82 feet to the POINT OF BEGINNING, N 05° 55' 54" E 13.24 feet more or less to the Ordinary High Water Mark, said water mark depicted as the CSLC January 25, 1941 Line, as shown on that map "Comparison of Areas Goleta Sand Spit", dated December 15, 1941 filed in the office the CSLC, thence along said OHWM the following eight (8) courses:

- 1) N 80° 39' 15" E 8.19 feet,
- 2) N 83° 50' 58" E 138.14 feet,
- 3) N 79° 31' 01" E 36.97 feet,
- 4) N 80° 24' 51" E 96.96 feet,
- 5) N 72° 15' 16" E 35.34 feet,
- 6) N 56° 50' 38" E 41.82 feet,
- 7) N 45° 01' 29" E 41.88 feet,
- 8) N 26° 38' 41" E 2.60 feet to the intersection of said SLC 1941 Line with the Ordinary High Water Mark as established under Boundary Line Agreement 3 between Pacific Lighting Corporation and the California State Lands Commission, executed on April 30, 1942 filed in the office of the CSLC, thence along said OHWM of BLA 3 the following three (3) courses:

- 1) N 81° 17' 32" W 203.74 feet,
- 2) N 67° 34' 50" W 329.56 feet,
- 3) N 76° 03' 26" W 8.17 feet,

thence leaving said OHWM of BLA 3, the following thirty-nine (39) courses:

- 1) N 25° 37' 28" E 21.85 feet,
- 2) S 65° 06' 02" E 89.67 feet,
- 3) S 63° 09' 11" E 23.48 feet,
- 4) S 62° 37' 54" E 12.44 feet,
- 5) N 22° 35' 40" E 35.38 feet,
- 6) S 68° 39' 43" E 29.31 feet,
- 7) S 67° 02' 21" E 34.46 feet,
- 8) S 64° 33' 07" E 57.11 feet,
- 9) S 71° 19' 34" E 31.17 feet,
- 10) S 77° 44' 23" E 17.15 feet,
- 11) S 85° 01' 10" E 99.22 feet,
- 12) N 89° 47' 04" E 53.98 feet,
- 13) S 37° 52' 56" E 26.08 feet,
- 14) S 69° 55' 42" E 38.91 feet,
- 15) S 87° 24' 55" E 54.41 feet,
- 16) S 78° 25' 17" E 57.63 feet,
- 17) S 74° 40' 50" E 124.72 feet,
- 18) S 81° 52' 24" E 52.07 feet,
- 19) S 89° 50' 34" E 66.17 feet,
- 20) S 67° 30' 00" E 49.60 feet,
- 21) S 33° 25' 45" E 23.66 feet,
- 22) S 10° 04' 17" W 94.64 feet,
- 23) S 54° 00' 52" W 67.13 feet,
- 24) S 80° 41' 52" W 55.65 feet,

- 25) N 85° 46' 45" W 56.75 feet,
- 26) N 79° 31' 06" W 53.77 feet,
- 27) N 83° 16' 07" W 52.34 feet,
- 28) N 84° 44' 41" W 54.44 feet,
- 29) N 86° 49' 32" W 49.83 feet,
- 30) S 85° 51' 54" W 37.20 feet,
- 31) S 73° 54' 54" W 20.74 feet,
- 32) S 60° 58' 39" W 38.01 feet,
- 33) S 89° 23' 37" W 66.31 feet,
- 34) N 23° 21' 54" W 63.40 feet,
- 35) N 89° 09' 09" W 22.75 feet to a point herein described a Point A,
- 36) S 16° 05' 24" W 39.36 feet,
- 37) N 76° 39' 33" W 55.76 feet,
- 38) N 87° 34' 08" W 51.69 feet and
- 39) N 74° 42' 17" W 48.88 feet to the beginning of a tangent curve, to the right through a central angle of 80° 38' 11.7", having a radius of 15.00 feet, and a length of 21.11 feet to the POINT OF BEGINNING.

EXCEPTING THEREFROM any portion lying landward of the Ordinary High Water Mark.

ALSO EXCEPTING THEREFROM any portion, along Goleta Slough, validly patented as Santa Barbara County Tideland Survey 49 filed on record at the offices of the California State Lands Commission.

Parcel 3 – Goleta Pier

BEGINNING at Point A, as described in Parcel 2 of this description, thence along the following twenty-one (21) courses:

- 1) S 16° 05' 24" W 10.71 feet,
- 2) S 00° 20' 38" W 559.09 feet,
- 3) S 04° 16' 33" W 54.75 feet,
- 4) S 00° 27' 51" E 231.89 feet,
- 5) S 16° 27' 05" E 630.88 feet,
- 6) N 73° 32' 55" E 37.50 feet,
- 7) N 16° 27' 05" W 406.13 feet,
- 8) N 32° 01' 24" E 69.44 feet,
- 9) N 57° 19' 40" W 38.17 feet,
- 10) S 35° 01' 38" W 25.85 feet,
- 11) N 74° 32' 46" W 7.99 feet,
- 12) N 16° 27' 05" W 156.47 feet,
- 13) N 00° 27' 51" W 226.14 feet,
- 14) N 00° 23' 53" E 54.23 feet,
- 15) N 00° 20' 38" E 149.79 feet,
- 16) N 89° 39' 22" E 14.78 feet,

- 17) N 00° 20' 38" E 47.59 feet,
- 18) S 89° 39' 22" W 14.78 feet,
- 19) N 00° 20' 38" E 353.62 feet,
- 20) N 23° 21' 54" W 20.26 feet and
- 21) N 89° 09' 09" W a distance of 22.75 feet to the POINT OF BEGINNING.

EXCEPTING THEREFROM any portion lying landward of the Ordinary High Water Mark.

Parcel 4A – County Bridge (NEW)

COMMENCING at USGLO monument "T4N,R28W,S20AMC" as shown on that map "Survey of the Mean High Tide Line Along the Shore of Santa Barbara Channel", dated April, 1958 filed in the office of the California State Lands Commission (CSLC), said monument having CCS 27(1958), Zone 5 coordinates Northing 338092.67 feet, Easting 1446493.53 feet, thence N 55° 15' 59" E 1749.40 feet to the POINT OF BEGINNING; thence S 13° 20' 22" E 127.79 feet; thence S 79° 42' 54" W 71.05 feet; thence N 13° 20' 22" W 122.75 feet; thence N 75° 38' 54" E 70.96 feet to the POINT OF BEGINNING.

EXCEPTING THEREFROM any portion lying landward of the Ordinary High Water Mark.

ALSO EXCEPTING THEREFROM any portion, along Goleta Slough, validly patented as Santa Barbara County Tideland Survey 49 filed on record at the offices of the California State Lands Commission.

Parcel 4B – County Bridge (OLD)

COMMENCING at USGLO monument "T4N,R28W,S20AMC" as shown on that map "Survey of the Mean High Tide Line Along the Shore of Santa Barbara Channel", dated April, 1958 filed in the office of the California State Lands Commission (CSLC), said monument having CCS 27(1958), Zone 5 coordinates Northing 338092.67 feet, Easting 1446493.53 feet, thence N 55° 15' 59" E 1749.40 feet to the POINT OF BEGINNING; thence N 75° 38' 54" E 55.34 feet; thence S 13° 20' 22" E 131.72 feet; thence S 79° 42' 54" W 55.41 feet; thence N 13° 20' 22" W 127.79 feet to the POINT OF BEGINNING.

EXCEPTING THEREFROM any portion lying landward of the Ordinary High Water Mark.

ALSO EXCEPTING THEREFROM any portion, along Goleta Slough, validly patented as Santa Barbara County Tideland Survey 49 filed on record at the offices of the California State Lands Commission.

Parcel 4C – Culvert

COMMENCING at USGLO monument "T4N,R28W,S20AMC" as shown on that map "Survey of the Mean High Tide Line Along the Shore of Santa Barbara Channel", dated April, 1958 filed in the office of the California State Lands Commission (CSLC), said monument having CCS 27(1958), Zone 5 coordinates Northing 338092.67 feet, Easting 1446493.53 feet, thence N 55° 52' 48" E 1801.38 feet to the POINT OF BEGINNING; thence N 75° 38' 54" E 30.00 feet; thence S 13° 20' 22" E 60.00 feet; thence S 75° 38' 54" W 30.00 feet; thence N 13° 20' 22" W 60.00 feet to the POINT OF BEGINNING.

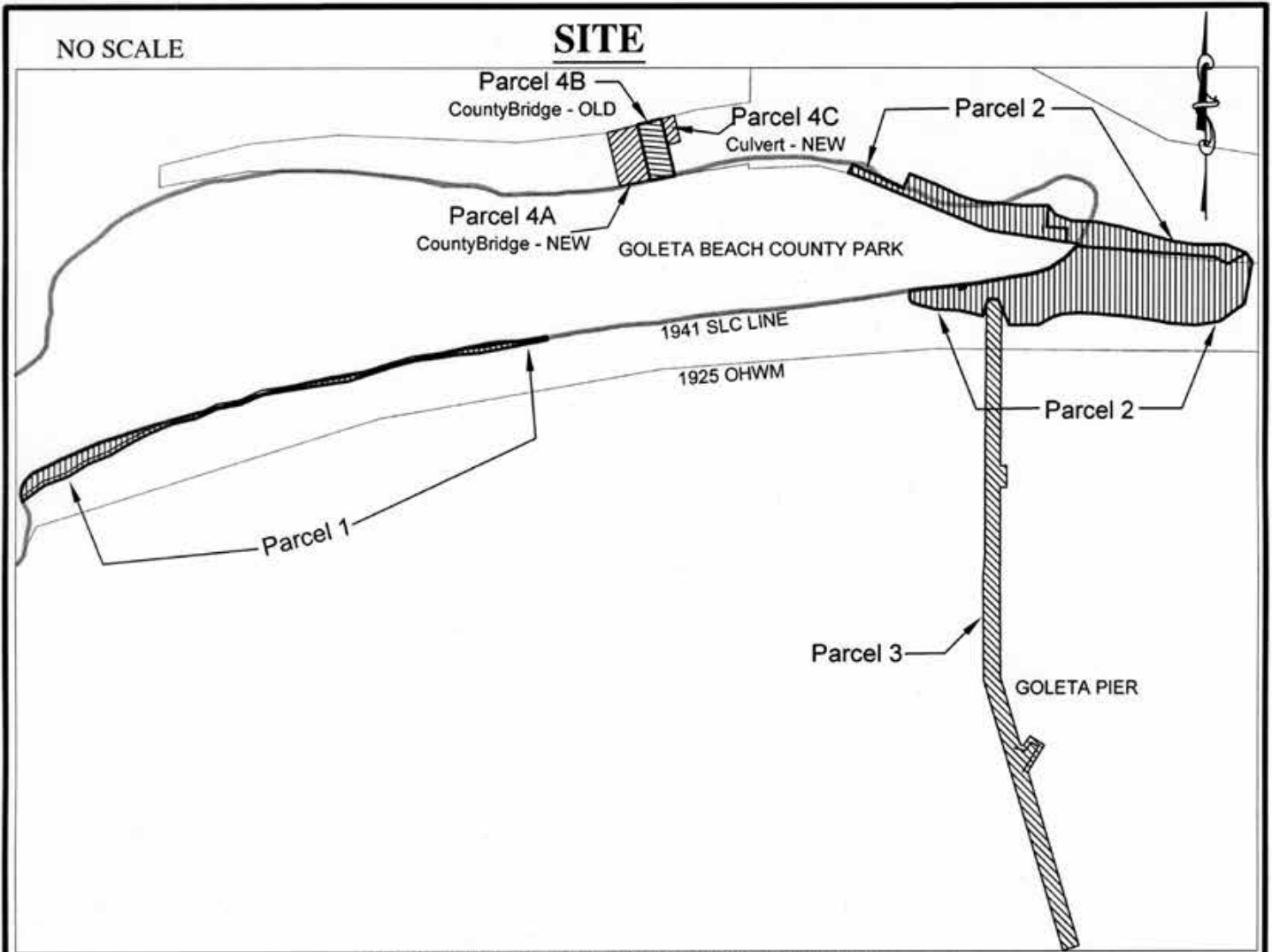
EXCEPTING THEREFROM any portion lying landward of the Ordinary High Water Mark.

ALSO EXCEPTING THEREFROM any portion, along Goleta Slough, validly patented as Santa Barbara County Tideland Survey 49 filed on record at the offices of the California State Lands Commission.

END OF DESCRIPTION

PREPARED 9/24/15 BY THE CALIFORNIA STATE LANDS COMMISSION BOUNDARY UNIT





GOLETA BEACH COUNTY PARK
APN 071-200-017, 009



Exhibit B
PRC 1431.9
COUNTY OF
SANTA BARBARA
GENERAL LEASE -
PUBLIC AGENCY USE
SANTA BARBARA CO.



This Exhibit is solely for purposes of generally defining the lease premises, is based on unverified information provided by the Lessee or other parties and is not intended to be, nor shall it be construed as, a waiver or limitation of any State interest in the subject or any other property.

EXHIBIT C
CALIFORNIA STATE LANDS COMMISSION
MITIGATION MONITORING PROGRAM
GOLETA BEACH PARK BRIDGE 51C-0158 REPLACEMENT PROJECT
(PRC 1431, State Clearinghouse No. 2014051081)

The California State Lands Commission (Commission) is a responsible agency under the California Environmental Quality Act (CEQA) for the Goleta Beach Park Bridge 51C-0158 Replacement Project (Project). The CEQA lead agency for the Project is the County of Santa Barbara.

In conjunction with approval of this Project, the Commission adopts this Mitigation Monitoring Program (MMP) for the implementation of mitigation measures for the portion(s) of the Project located on Commission lands. The purpose of a MMP is to discuss feasible measures to avoid or substantially reduce the significant environmental impacts from a project identified in an Environmental Impact Report (EIR) or a Mitigated Negative Declaration. State CEQA Guidelines section 15097, subdivision (a), states in part:¹

In order to ensure that the mitigation measures and project revisions identified in the EIR or negative declaration are implemented, the public agency shall adopt a program for monitoring or reporting on the revisions which it has required in the project and the measures it has imposed to mitigate or avoid significant environmental effects. A public agency may delegate reporting or monitoring responsibilities to another public agency or to a private entity which accepts the delegation; however, until mitigation measures have been completed the lead agency remains responsible for ensuring that implementation of the mitigation measures occurs in accordance with the program.

The lead agency has adopted a MMP for the whole of the Project (see Exhibit C, Attachment C-1) and remains responsible for ensuring that implementation of the mitigation measures occurs in accordance with its program. The Commission's action and authority as a responsible agency apply only to the mitigation measures listed in Table C-1 below.

¹ The State CEQA Guidelines are found at California Code of Regulations, Title 14, section 15000 et seq.

Table C-1. Project Impacts and Applicable Mitigation Measures.

Potential Impact	Mitigation Measure (MM) ²
4.1(c): The Project may result in glare or night lighting which may affect adjoining areas	AES/mm-1: No highly reflective exterior materials shall be used.
4.3(c): The Project may result in generation excessive dust	AQ/mm-1: Standard construction equipment exhaust impact mitigation.
	AQ/mm-2: Standard particulate matter and dust generation impact mitigation.
4.4(a): The Project may result in a loss or disturbance to a unique, rare or threatened plant community	BIO/mm-4: Permanently impacted jurisdictional areas and environmentally sensitive habitat areas will be replaced at a rate of 3:1. Temporarily impacted areas will be replaced at a rate of 1:1.
4.4(b): The Project may result in a reduction in the numbers or restriction in the range of a rare or threatened species of plant	BIO/mm-1: Biological monitors shall be on site for the entirety of the construction period.
	BIO/mm-2: The Project shall adhere to a work window of April 1 to October 31.
	BIO/mm-3: Prior to construction, exclusion fencing shall be installed around off-limit areas.
	BIO/mm-4: See above.
4.4(c): The Project may result in a reduction in the extent, diversity or quality of native vegetation	BIO/mm-4: See above.
4.4(f): The Project may result in introduction of herbicides, pesticides, non-native plants or other factors that may change the existing habitat	BIO/mm-1: See above.
	BIO/mm-5: Removed habitat shall be replaced at a 3:1 ratio.
	BIO/mm-6: Silt fencing, fiber rolls and barriers shall be installed at the Project site.
4.4(g): The Project may result in a reduction in the numbers, restriction in the range, or an impact to the critical habitat of any unique, rare, threatened or endangered species of animals	BIO/mm-1: See above.
	BIO/mm-9: No pets are allowed at the construction site.
	BIO/mm-10: Environmental Awareness Training Program for in-stream work.
	BIO/mm-11: Monitoring of stream diversions for steelhead and relocation of steelhead, if found.
	BIO/mm-12: Any dewatering pumps shall be completely screened with mesh no larger than 0.2 inches.
	BIO/mm-13: Silt curtains shall be used during piling removal.

² See Attachment C-1 for the full text of each MM taken from the MMP prepared by the CEQA lead agency.

Potential Impact	Mitigation Measure (MM) ²
	BIO/mm-14: Biological monitor shall monitor erosion and sediment controls.
	BIO/mm-15: If drilling slurry is used, all slurry and soil saturated with slurry shall be removed.
	BIO/mm-16: The use of impact hammers for pile driving is prohibited.
	BIO/mm-17: Monitoring of stream diversions for tidewater goby and relocation of tidewater goby, if found.
	BIO/mm-18: Any dewatering pumps shall be completely screened with mesh no larger than 0.2 inches.
	BIO/mm-19: Vegetation removal shall occur outside the nesting season, if possible, and exclusion netting may be installed.
	BIO/mm-20: If construction activities occur during the nesting season, a nesting bird survey shall be conducted no more than two weeks prior to construction. Work activities shall be avoided within 100 feet of active bird nests and 500 feet of active raptor nests.
	BIO/mm-21: White-tailed kite and Belding's Savannah sparrow nests shall not be removed regardless of their nesting status.
4.4(h): The Project may result in a reduction in the diversity or numbers of animals onsite	BIO/mm-1 through BIO/mm-6: See above.
	BIO/mm-7: Invasive species control measures.
	BIO/mm-8: All trash and construction debris shall be contained and removed from the Project site.
	BIO/mm-9 through BIO/mm-BIO/mm-21: See above.
4.4(i): The Project may result in a deterioration of existing fish or wildlife habitat.	BIO/mm-4: See above.
4.4(j): The Project may result in introduction of barriers to movement for fish and wildlife	BIO/mm-9 through BIO/mm-18: See above.
4.5(d):The Project may result in ground disturbances in an area with potential cultural resource sensitivity based on the location of known historic or prehistoric sites	CR/mm-1: Stop work upon discovery of historic or archaeological resources.
	CR/mm-2: Stop work upon discovery of human remains.
4.7(b): The Project may result in a fire hazard	FIRE/mm-1: Fire preventative measures including maintaining fire extinguishers in every vehicle.

Potential Impact	Mitigation Measure (MM) ²
4.9(b): The Project may result in the use, storage or distribution of hazardous materials	HAZ/mm-1: Hazardous Material Spill Prevention, Control and Countermeasure Plan.
4.9(e): The Project may result in creation of a potential public health hazard	HAZ/mm-2: Sediment Disposal Plan.
4.12(b): The Project may result in short term exposure of people to noise levels exceeding County thresholds	NOISE/mm-1: Construction activities are limited from 7:00 a.m. to 5:00 p.m. Monday through Friday.
4.12(c): The Project may result in substantial increase in the ambient noise levels for adjoining areas	NOISE/mm-1: See above.
4.16(b): The Project may result in changes to percolation rates, drainage patterns or the rate and amount of surface water runoff	WR/mm-1: Water Pollution Control Plan to limit surface runoff and prevent fuel spills.
4.16(d): The Project may result in discharge into surface waters or alteration of surface water quality	WR/mm-1: See above.
4.16(j): The Project may result in the substantial degradation of groundwater quality	WR/mm-1: See above.
6.0(1): The Project may have the potential to substantially degrade the quality of the environment	BIO/mm-1 through BIO/mm-21: See above.
6.0(3): The Project may have the potential to cumulatively effect the environment	All mitigation measures listed above.
6.0(4): The Project may have the potential to substantially effect human beings	NOISE/mm-1: See above.

ATTACHMENT C-1

**Mitigation Monitoring Program Adopted by the
County of Santa Barbara**

Goleta Beach Park Bridge Replacement Project Mitigation Monitoring and Reporting Program

Mitigation Measure	Requirements of Measure	Compliance Method	Verification Timing	Responsible Party
<i>Aesthetic/Visual Resources</i>				
AES/mm-1	<p>Prior to construction, final plans shall be submitted for review and approval by the County Department of Public Works consistent with the following conditions:</p> <p>a) No highly reflective exterior materials such as chrome, bright stainless steel, or glossy tile shall be used on any portions of the development visible from off-site locations.</p>	<p>These requirements shall be noted in plan specifications.</p> <p>The County RE shall ensure compliance through an inspection of plans prior to construction and an on-site inspection after development.</p>	<p>Plans shall be reviewed for consistency with these requirements by the County RE prior to construction and confirmed after development.</p>	County RE
<i>Air Quality</i>				
AQ/mm-1	<p>The County shall implement standard construction equipment exhaust impact mitigation measures as follows. All measures shall be detailed in County specifications, and shall be adhered to throughout grading, hauling, and construction activities.</p> <p>a) Diesel construction equipment meeting the California Air Resources Board (CARB) Tier 1 emission standards for off-road heavy-duty diesel engines shall be used. Equipment meeting CARB Tier 2 or higher emission standards should be used to the maximum extent feasible.</p> <p>b) Diesel powered equipment should be replaced by electric equipment whenever feasible.</p> <p>c) If feasible, diesel construction equipment shall be equipped with selective catalytic reduction systems, diesel oxidation catalyst and diesel particulate filters as certified and/or verified by EPA or California.</p> <p>d) Catalytic converters shall be installed on gasoline-powered equipment, if feasible.</p> <p>e) All construction equipment shall be maintained in tune per the manufacturer's specifications.</p> <p>f) The engine size of construction equipment shall be the minimum practical size.</p> <p>g) The number of construction equipment operating simultaneously shall be minimized through efficient management practices to ensure that the smallest practical number is operating at any one time.</p> <p>h) Construction worker trips should be minimized by requiring carpooling and by providing for lunch onsite.</p>	<p>These requirements shall be noted in plan specifications.</p> <p>Plans shall be reviewed for consistency with these requirements by the County prior to construction.</p> <p>The County RE shall perform periodic site inspections to ensure compliance with these requirements.</p>	<p>These requirements shall be adhered to throughout the period of all grading and construction activities.</p>	County RE
AQ/mm-2	<p>The County shall implement standard construction particulate matter impact mitigation measures as follows. All measures shall be detailed in County specifications, and shall be adhered to throughout grading, hauling, and construction activities.</p> <p>a) During construction, use water trucks or sprinkler systems to keep all areas of vehicle movement damp enough to prevent dust from leaving the site. At a minimum, this should include wetting down such areas in the late morning and after work is completed for the day. Increased watering frequency should be required whenever the wind speed exceeds 15 miles per hour. Reclaimed water should be used whenever possible. However, reclaimed water should not be used in or around crops for human consumption.</p> <p>b) Minimize amount of disturbed area and reduce on-site vehicle speeds to 15 miles per hour or less.</p> <p>c) If importation, exportation and stockpiling of fill material is involved, soil stockpiled for more than two days shall be covered, kept moist, or treated with soil binders to prevent dust generation. Trucks transporting fill material to and from the site shall be tarped from the point of origin.</p> <p>d) Gravel pads shall be installed at all access points to prevent tracking of mud onto public roads.</p> <p>e) After clearing, grading, earthmoving or excavation is completed, treat the disturbed area by watering, or revegetating, or by spreading soil binders until the area is paved or otherwise developed so that dust generation will not occur.</p> <p>f) The contractor or builder shall designate a person or persons to monitor the dust control program and to order increased watering, as necessary, to prevent transport of dust off-site. Their duties shall include holiday and weekend periods when work may not be in progress. The name and telephone number of such persons shall be provided to the Air Pollution Control District prior to the start of construction.</p>	<p>These requirements shall be noted in plan specifications.</p> <p>Plans shall be reviewed for consistency with these requirements by the County prior to construction.</p> <p>The County RE shall perform periodic site inspections to ensure compliance with these requirements.</p>	<p>These requirements shall be adhered to throughout the period of all grading and construction activities.</p>	County RE
<i>Biological Resources</i>				

Goleta Beach Park Bridge Replacement Project Mitigation Monitoring and Reporting Program

Mitigation Measure	Requirements of Measure	Compliance Method	Verification Timing	Responsible Party
BIO/mm-1	Prior to construction, the County shall retain a qualified biological monitor(s) to ensure compliance with measures within the project environmental documents. Monitoring shall occur throughout the length of construction or as directed by the regulatory agencies. Full-time monitoring shall occur during vegetation removal and erosion control installation. Monitoring may be reduced to part time once construction activities are underway and the potential for additional impacts are reduced.	These requirements shall be noted in plan specifications. Monitoring shall be performed by a qualified biologist approved by the USFWS. Weekly monitoring reports shall be submitted to the County RE, County Senior Engineering Environmental Planner, and any additional regulatory permitting agencies. The County RE shall perform periodic site inspections to ensure compliance with these requirements.	Plans shall be reviewed for consistency with these requirements by the County RE prior to construction. Biological monitoring shall occur throughout the length of construction activities or as directed by the appropriate regulatory agencies.	County RE Biological Monitor
BIO/mm-2	Construction activities within the Slough banks shall be conducted outside of the rain season, which is considered to be November 1 through March 31 of any year. This provides a work window from April 1 to October 31 in any given year, or as otherwise directed by the regulatory agencies. Deviations from this work window can be made with permission from the relevant regulatory agencies.	These requirements shall be noted in plan specifications. The County RE shall monitor the construction schedule and perform periodic site inspections to ensure compliance with these requirements.	Compliance with these requirements shall be confirmed by the County RE prior to construction.	County RE
BIO/mm-3	Prior to construction, the project plans shall clearly show the placement of sturdy construction exclusion fencing. Immediately prior to construction, the project site will be clearly fenced so that the contractor is aware of the limits of allowable site access and disturbance. Areas within the designated project site that do not require regular access will be clearly flagged as off-limit areas to avoid/discourage unnecessary damage to ESHAs within the project site.	These requirements shall be noted in plan specifications. The County RE shall perform site inspections immediately prior to construction and periodically thereafter to ensure compliance with these requirements.	These requirements shall be complied with throughout the period of construction activities.	County RE
BIO/mm-4	Prior to construction, the applicant shall prepare a comprehensive HMMP to mitigate impacts to jurisdictional areas and ESHAs consistent with the following requirements. The final HMMP will include the specific mitigation sites within the Slough, based on a minimum replacement of 3:1 for permanent impacts to riparian and wetland habitat, and a minimum of 1:1 for temporary impacts, or as otherwise directed by regulatory agencies. Mitigation plantings must have a minimum of 80% survival in the first year and 100% survival thereafter and/or shall attain 75% cover after 3 years and 90% cover after 5 years for the life of the project. The HMMP must be consistent with federal and state regulatory requirements and shall be amended with any regulatory permit conditions, as required. The County shall implement the HMMP during construction and immediately following project completion.	These requirements shall be noted in plan specifications. The Final HMMP shall be provided to the County RE prior to construction. Compliance during construction shall be verified through on-site monitoring and submittal of weekly monitoring reports by the County-approved biological monitor. Weekly monitoring reports shall be submitted to the County RE and County Senior Engineering Environmental Planner, and any additional regulatory permitting agencies.	The HMMP shall be prepared and reviewed for consistency with these requirements by the County RE and County Senior Engineering Environmental Planner, in consultation with a County-approved biologist, prior to construction.	County RE Biological Monitor
BIO/mm-5	Removed riparian shrubs, coastal bluff scrub and Southern Coastal salt marsh present in the BSA shall be replaced at a minimum 3:1 replacement ratio, or as otherwise directed by regulatory agencies. Methods for vegetation replacement shall be incorporated into the final HMMP, and shall include maintenance and monitoring to ensure a minimum of 80% survival in the first year and 100% survival thereafter and/or shall attain 75% cover after 3 years and 90% cover after 5 years for the life of the project.	These requirements shall be noted in plan specifications. The Final HMMP shall be provided to the County RE and County Senior Engineering Environmental Planner prior to construction.	The HMMP shall be reviewed for consistency with these requirements by the County RE, in consultation with a County-approved biologist, prior to construction.	County RE County-approved biologist
BIO/mm-6	During construction, the County shall implement standard Best Management Practices, including but not limited to the following standards. Silt fencing, fiber rolls, and barriers (e.g., hay bales) shall be installed between the project site and adjacent wetlands and other waters. No synthetic plastic mesh products shall be used in any erosion control materials. At a minimum, silt fencing shall be checked and maintained on a daily basis throughout the construction period. The contractor shall also apply adequate dust control techniques, such as site watering, during construction.	These requirements shall be noted in plan specifications. The County RE shall perform periodic site inspections to ensure compliance with these requirements. Compliance during construction shall be verified through on-site monitoring and submittal of weekly monitoring reports by the County-approved biological monitor. Weekly monitoring reports shall be submitted to the County RE, County Senior Engineering Environmental Planner, and any additional regulatory permitting agencies.	Plans shall be reviewed for consistency with these requirements by the County RE prior to construction. Implementation of the BMPs shall occur prior to and during construction.	County RE
BIO/mm-7	During construction, the biological monitor(s) shall ensure that the spread or introduction of invasive exotic plant species is avoided to the maximum extent possible through the following measures: a. When practicable, invasive exotic plants in the project site shall be removed and properly disposed. b. The use of imported soils for fill shall be limited to the extent feasible. If the use of imported fill material is necessary, the imported material must be obtained from a source that is known to be free of invasive plant species, or the material must consist of purchased clean material such as crushed aggregate, sorted rock or similar materials. c. The HMMP shall emphasize the use of native species expected to occur in the area. d. The HMMP shall incorporate an invasive species control program.	These requirements shall be noted in plan specifications. The County RE shall perform periodic site inspections to ensure compliance with these requirements. Compliance during construction shall be verified through on-site monitoring and submittal of weekly monitoring reports by the County-approved biological monitor. Weekly monitoring reports shall be submitted to the County RE, County Senior Engineering Environmental Planner, and any additional regulatory permitting agencies.	Plans shall be reviewed for consistency with these requirements by the County RE prior to construction. Implementation shall occur during construction.	County RE Biological Monitor

Goleta Beach Park Bridge Replacement Project Mitigation Monitoring and Reporting Program

Mitigation Measure	Requirements of Measure	Compliance Method	Verification Timing	Responsible Party
BIO/mm-8	During construction, trash shall be contained, removed from the work site, and disposed of regularly. Following construction, all trash and construction debris will be removed from work areas and properly disposed of at a certified landfill. All vegetation removed from the construction site shall be taken to a certified landfill to prevent the spread of invasive species. If soil from weedy areas (such as areas with poison hemlock or other invasive exotic plant species) must be removed off-site, the top 6 inches (in) (152 millimeters [mm]) containing the seed layer in areas with weedy species shall be disposed of at a certified landfill.	These requirements shall be noted in plan specifications. The County RE shall perform periodic site inspections to ensure compliance with these requirements. Compliance during construction shall be verified through on-site monitoring and submittal of weekly monitoring reports by the County-approved biological monitor. Weekly monitoring reports shall be submitted to the County RE, County Senior Engineering Environmental Planner, and any additional regulatory permitting agencies.	Plans shall be reviewed for consistency with these requirements by the County RE prior to construction. Implementation shall occur during construction.	County RE Biological Monitor
BIO/mm-9	During construction, no pets shall be allowed on the construction site.	These requirements shall be noted in plan specifications. The County RE shall perform periodic site inspections to ensure compliance with these requirements. Compliance during construction shall be verified through on-site monitoring and submittal of weekly monitoring reports by the County-approved biological monitor. Weekly monitoring reports shall be submitted to the County RE, County Senior Engineering Environmental Planner, and any additional regulatory permitting agencies.	Plans shall be reviewed for consistency with these requirements by the County RE prior to construction. Implementation shall occur during construction.	County RE Biological Monitor
BIO/mm-10	Prior to construction, all construction personnel conducting in-stream work shall participate in an environmental awareness training program conducted by a qualified biologist. The program must include a description of all sensitive species and sensitive habitats within the BSA, including aquatic species such as south-central California coast steelhead and tidewater goby, their ecology, legal status, and the need for species conservation.	These requirements shall be noted in plan specifications. A report documenting completion of the training shall be provided to the County RE prior to in-stream construction activities, including a sign-in sheet noting the names of all present.	Plans shall be reviewed for consistency with these requirements by the County RE prior to construction. The training shall occur prior to and during construction, as new workers join the construction crew.	County RE County-approved biologist
BIO/mm-11	Prior to conducting any in-stream work activities, a qualified biologist shall be retained with experience in steelhead biology, aquatic habitats, biological monitoring (including diversion/dewatering), and capturing, handling, and relocating fish species. During in-stream work, the biological monitor(s) shall continuously monitor placement and removal of any required stream diversions to capture stranded steelhead and other native fish species and relocate them to suitable habitat as appropriate. The biologist shall note the number of native fish observed in the affected area, the number of fish relocated, and the date and time of the collection and relocation.	These requirements shall be noted in plan specifications. Monitoring shall be performed by a qualified biologist approved by the USFWS. The County RE shall perform site inspections prior to in-stream work activities and periodically thereafter to ensure compliance with these requirements. Compliance during construction shall be verified through on-site monitoring and submittal of weekly monitoring reports by the County-approved biological monitor. Weekly monitoring reports shall be submitted to the County RE, County Senior Engineering Environmental Planner, and any additional regulatory permitting agencies.	Plans shall be reviewed for consistency with these requirements by the County RE prior to construction. Implementation shall occur prior to and during in-stream construction work.	County RE Biological Monitor
BIO/mm-12	During in-stream work, if pumps are incorporated to assist in temporarily dewatering the site, intakes shall be completely screened with no larger than 0.2-in wire mesh to prevent steelhead and other sensitive aquatic species from entering the pump system. Pumps shall release the additional water to a settling basin allowing the suspended sediment to settle out prior to re-entering the stream outside of the isolated area. The form and function of all pumps used during the dewatering activities shall be checked daily, at a minimum, by a qualified biological monitor to ensure a dry work environment and minimize adverse effects to aquatic species and habitats.	These requirements shall be noted in plan specifications. Monitoring shall be performed by a qualified biologist approved by the USFWS. The County RE shall perform site inspections prior to in-stream work activities and periodically thereafter to ensure compliance with these requirements. Compliance during construction shall be verified through on-site monitoring and submittal of weekly monitoring reports by the County-approved biological monitor. Weekly monitoring reports shall be submitted to the County RE, County Senior Engineering Environmental Planner, and any additional regulatory permitting agencies.	Plans shall be reviewed for consistency with these requirements by the County RE prior to construction. Implementation shall occur prior to and during in-stream construction work.	County RE Biological Monitor

Goleta Beach Park Bridge Replacement Project Mitigation Monitoring and Reporting Program

Mitigation Measure	Requirements of Measure	Compliance Method	Verification Timing	Responsible Party
BIO/mm-13	During construction, the contractor shall utilize silt curtains during installation and removal of piles to reduce water turbidity.	These requirements shall be noted in plan specifications. The County RE shall perform a site inspection immediately prior to installation and removal of the piles to ensure compliance with these requirements.	Plans shall be reviewed for consistency with these requirements by the County RE prior to construction. Implementation shall occur during construction.	County RE
BIO/mm-14	During construction, the biological monitor shall monitor erosion and sediment controls to identify and correct any conditions that could adversely affect sensitive aquatic species or habitats. The biological monitor shall be granted the authority to halt work activity as necessary and to recommend measures to avoid/minimize adverse effects to sensitive species and their habitat.	These requirements shall be noted in plan specifications. The County RE shall perform periodic site inspections to ensure compliance with these requirements. Compliance during construction shall be verified through on-site monitoring and submittal of weekly monitoring reports by the County-approved biological monitor. Weekly monitoring reports shall be submitted to the County RE, County Senior Engineering Environmental Planner, and any additional regulatory permitting agencies.	Plans shall be reviewed for consistency with these requirements by the County RE prior to construction. Implementation shall occur prior to and during construction.	County RE Biological Monitor
BIO/mm-15	If drilling slurry is used during CIDH installation and/or pile installation, the Contractor shall remove all slurry and drilled soil material that is saturated with slurry from the site and dispose of it in accordance with applicable local, state and federal regulations. Drilling slurry may be contained in a baker tank and the separated water may be used as dust control on the upland portions of the site.	These requirements shall be noted in plan specifications. If the use of drilling slurry is proposed, the County RE shall perform periodic site inspections to ensure compliance with these requirements.	Plans shall be reviewed for consistency with these requirements by the County RE prior to construction. Implementation shall occur during construction.	County RE
BIO/mm-16	To avoid hydro-acoustic effects to steelhead, tidewater goby and other fishes, the use of impact hammers for pile driving shall be prohibited. If pile driving is deemed necessary, the contractor shall employ vibratory or push type hammers. If at any time the use of vibratory or push hammers is deemed ineffective or infeasible and the use of impact hammers is considered, pile driving activities shall be halted. Impact hammers shall not be used until the County, in consultation with Caltrans and USFWS, conducts an analysis of the potential effects of elevated sound levels that may result from the use of impact hammers. The analysis must be reviewed and approved by USFWS prior to the use of impact hammers on the project. This may require a re-initiation of formal Section 7 Consultation with USFWS and additional avoidance and minimization efforts and monitoring.	These requirements shall be noted in plan specifications. The County RE shall perform periodic site inspections to ensure compliance with these requirements. Compliance during construction shall be verified through on-site monitoring and submittal of weekly monitoring reports by the County-approved biological monitor. Weekly monitoring reports shall be submitted to the County RE, County Senior Engineering Environmental Planner, and any additional regulatory permitting agencies.	Plans shall be reviewed for consistency with these requirements by the County RE prior to construction. Implementation shall occur during construction.	County RE Biological Monitor
BIO/mm-17	Prior to conducting any in-stream work, a qualified biologist shall be retained with experience in tidewater goby biology, aquatic habitats, biological monitoring (including diversion/dewatering), and capturing, handling, and relocating fish species. During in-stream work, the biological monitor(s) shall continuously monitor placement and removal of any required stream diversions to capture stranded tidewater goby and other native fish species and relocate them to suitable habitat as appropriate. The biologist shall note the number of native fish observed in the affected area, the number of fish relocated, and the date and time of the collection and relocation.	These requirements shall be noted in plan specifications. The County RE shall perform periodic site inspections to ensure compliance with these requirements. Compliance during construction shall be verified through on-site monitoring and submittal of weekly monitoring reports by the County-approved biological monitor. Weekly monitoring reports shall be submitted to the County RE, County Senior Engineering Environmental Planner, and any additional regulatory permitting agencies.	Plans shall be reviewed for consistency with these requirements by the County RE prior to construction. Implementation shall occur prior to and during in-stream construction work.	County RE
BIO/mm-18	During in-stream work, if pumps are incorporated to assist in temporarily dewatering the site, intakes shall be completely screened with no larger than 0.2-in wire mesh to prevent tidewater goby and other sensitive aquatic species from entering the pump system. Pumps shall release the additional water to a settling basin allowing the suspended sediment to settle out prior to re-entering the stream(s) outside of the isolated area. The form and function of all pumps used during the dewatering activities shall be checked daily, at a minimum, by a qualified biological monitor to ensure a dry work environment and minimize adverse effects to aquatic species and habitats.	These requirements shall be noted in plan specifications. Implementation shall occur during in-stream construction. Monitoring shall be performed by a qualified biologist approved by the USFWS. The County RE shall perform site inspections prior to in-stream work activities and periodically thereafter to ensure compliance with these requirements. Compliance during construction shall be verified through on-site monitoring and submittal of weekly monitoring reports by the County-approved biological monitor. Weekly monitoring reports shall be submitted to the County RE, County Senior Engineering Environmental Planner, and any additional regulatory permitting agencies.	Plans shall be reviewed for consistency with these requirements by the County RE prior to construction.	County RE Biological Monitor

Goleta Beach Park Bridge Replacement Project Mitigation Monitoring and Reporting Program

Mitigation Measure	Requirements of Measure	Compliance Method	Verification Timing	Responsible Party
BIO/mm-19	Prior to construction, the applicant shall schedule vegetation removal to occur outside of the nesting season (September 1 to February 14), if possible. To avoid potential delays due to nesting birds on the existing bridge, the applicant may install exclusion netting per Caltrans standards.	These requirements shall be noted in plan specifications. The County RE shall perform periodic site inspections to ensure compliance with these requirements. If netting is installed, it shall be conducted under review by a qualified biologist and documented in a weekly monitoring report or site inspection report.	Plans shall be reviewed for consistency with these requirements by the County RE prior to construction. Implementation shall occur prior to construction.	County RE County-approved biologist
BIO/mm-20	Prior to construction, if construction activities occur during the typical nesting season (February 15 to August 31), a nesting bird survey shall be conducted by qualified biologists no more than two weeks prior to construction to determine presence/absence of nesting birds within the project area. Work activities shall be avoided within 100 feet of active bird nests and 500 feet of active raptor nests until young birds have fledged and left the nest. Readily visible exclusion zones shall be established in areas where nests must be avoided. Caltrans, USFWS, and CDFW shall be contacted if any federally or state listed bird species are observed during surveys. Nests, eggs, or young of birds covered by the MBTA and California Fish and Game Code may not be moved or disturbed until the end of the nesting season or until young fledge, whichever is later, nor would adult birds be killed, injured, or harassed at any time.	These requirements shall be noted in plan specifications. The County RE shall perform periodic site inspections to ensure compliance with these requirements. Compliance during construction within the nesting season shall be verified through on-site monitoring and submittal of weekly monitoring reports by the County-approved biological monitor. Weekly monitoring reports shall be submitted to the County RE, County Senior Engineering Environmental Planner, and any additional regulatory permitting agencies.	Plans shall be reviewed for consistency with these requirements by the County RE prior to construction during the nesting season. Compliance shall be verified prior to and during construction within the nesting season.	County RE Biological Monitor
BIO/mm-21	White-tailed kite and Belding's Savannah sparrow nests cannot be removed regardless of their nesting status. The County shall ensure avoidance of take of the Fully Protected white-tailed kite and state endangered Belding's Savannah sparrows. Vegetation removal in potential nesting habitats shall be monitored and documented by the biological monitor(s) regardless of time of year.	These requirements shall be noted in plan specifications. The County RE shall perform periodic site inspections to ensure compliance with these requirements. Compliance during construction shall be verified through on-site monitoring and submittal of weekly monitoring reports by the County-approved biological monitor. Weekly monitoring reports shall be submitted to the County RE, County Senior Engineering Environmental Planner, and any additional regulatory permitting agencies.	Plans shall be reviewed for consistency with these requirements by the County RE prior to construction. Implementation shall occur prior to and during construction.	County RE Biological Monitor
Cultural Resources				
CR/mm-1	In the event prehistoric or historic archaeological remains or artifacts are encountered during grading, excavation, or other earth-moving activities, all work in the vicinity of the find shall be stopped immediately or redirected until a County qualified archaeologist and Native American representative have evaluated the significance of the find consistent with Phase 2 investigations of the County Archaeological Guidelines. If buried resources are encountered and found to be significant per Phase 2 Cultural Resource Significance Determination guidelines, a mitigation program consistent with Phase 3 Mitigation guidelines shall be required and all resources shall be subject to the requirements of that plan.	These requirements shall be noted in plan specifications. A County approved archaeologist shall evaluate the significance of any archaeological resources discovered at the site and shall conduct the required investigation. The County Senior Engineering Environmental Planner shall ensure compliance with this measure through site inspections and approval of all necessary investigation documentation.	Plans shall be reviewed for consistency with these requirements by the County RE prior to construction. Implementation shall occur during construction (if necessary).	County RE

Goleta Beach Park Bridge Replacement Project Mitigation Monitoring and Reporting Program

Mitigation Measure	Requirements of Measure	Compliance Method	Verification Timing	Responsible Party
CR/mm-2	If human remains are unearthed, State Health and Safety Code Section 7050.5 requires that no further disturbance shall occur until the County Coroner has made the necessary findings as to origin and disposition pursuant to Public Resource Code Section 5097.98. If the remains are determined to be of Native American decent, the coroner has 24 hours to notify the Native American Heritage Commission.	These requirements shall be noted in plan specifications. A County approved archaeologist shall evaluate the significance of any archaeological remains discovered at the site and shall conduct the required investigation. The County Senior Engineering Environmental Planner shall ensure compliance with this measure through site inspections and approval of all necessary investigation documentation.	Plans shall be reviewed for consistency with these requirements by the County RE prior to construction. Implementation shall occur during construction (if necessary).	County RE
Fire Protection				
FIRE/mm-1	To minimize potential construction related fire hazards, a Fire Awareness and Avoidance Plan shall be prepared. The Plan shall include the following measures: a) Fire preventative measures addressing cutting, grinding and welding; b) Maintaining fire extinguishers in every vehicle on site; c) Maintaining a water truck on site if working during fire season; d) Communication with emergency response agencies.	These requirements shall be noted in plan specifications and the Fire Awareness and Avoidance Plan shall be included in the project plans. The County RE shall perform periodic site inspections to ensure compliance with these requirements.	The County RE shall review the plans and inspect the project site prior to construction to ensure consistency with these requirements. Implementation of the Fire Awareness and Avoidance Plan shall occur prior to and during construction.	County RE
Hazardous Materials/Risk of Upset				
HAZ/mm-1	Prior to construction, the County shall prepare a Hazardous Material Spill Prevention, Control and Countermeasure Plan to minimize the potential for, and effects of, spills of hazardous or toxic substances during construction of the project. The plan shall be submitted for review and approval by the County Public Works Resident Engineer, and shall include, at minimum, the following: a) A description of storage procedures and construction site maintenance and upkeep practices; b) Identification of a person or persons responsible for monitoring implementation of the plan and spill response; c) Identification of Best Management Practices (BMPs) to be implemented to ensure minimal impacts to the environment occur, including but not limited to the use of containment devices for hazardous materials, training of construction staff regarding safety practices to reduce the chance for spills or accidents, and use of non-toxic substances where feasible; d) A description of proper procedures for containing, diverting, isolating, and cleaning up spills, hazardous substances and/or soils, in a manner that minimizes impacts on surface and groundwater quality and sensitive biological resources; e) A description of the actions required if a spill occurs, including which authorities to contact and proper clean-up procedures; and f) A requirement that all construction personnel participate in an awareness training program conducted by qualified personnel approved by the County RE. The training must include a description of the Hazardous Materials Spill Prevention, Control and Countermeasure Plan, the plan's requirements for spill prevention, information regarding the importance of preventing spills, the appropriate measures to take should a spill occur, and identification of the location of all clean-up materials and equipment.	These requirements shall be noted in plan specifications and the Hazardous Materials Spill Prevention, Control and Countermeasure Plan shall be included with the project plans. Plans shall be reviewed for consistency with these requirements by the County RE prior to construction. Construction personnel training shall be confirmed by the County RE prior to construction by review of appropriate documentation of the training, including a list of the training attendees. The County RE shall perform periodic site inspections to ensure compliance with these requirements.	Measures in the Plan shall be implemented, as appropriate, through the duration of the construction activities. Implementation of the Plan shall occur prior to and during construction.	County RE

Goleta Beach Park Bridge Replacement Project Mitigation Monitoring and Reporting Program

Mitigation Measure	Requirements of Measure	Compliance Method	Verification Timing	Responsible Party
HAZ/mm-2	The Contractor shall prepare a Sediment Disposal Plan to determine the proper handling and disposal methods of all excavated sediments and tailings. The plan shall require sampling for various constituents in the soils to determine appropriate disposal alternatives. The plan shall be submitted to the County RE for review and approval of recommended sediment handling and disposal methods and locations. If the plan determines that soil sampling is necessary to determine the level of contaminants in on-site sediments, preliminary soil sampling reports shall be prepared for review and approval by the County RE prior to initiation of extensive grading or excavation activities.	These requirements shall be noted in plan specifications. The Sediment Disposal Plan shall be prepared by the project contractor. The Sediment Disposal Plan shall be approved by the County RE prior to the initiation of project construction. The County RE shall perform periodic site inspections to ensure compliance with the plan requirements.	Plans shall be reviewed for consistency with these requirements by the County RE prior to construction. Implementation of the Plan shall occur prior to and during construction.	County RE
Noise				
NOISE/mm-1	N/mm-1 To minimize potentially significant construction-related noise impacts, the following standard measures shall be shown on applicable plans and implemented during construction: a) Construction activities involving heavy equipment or heavy-duty truck traffic shall be limited from 7:00 a.m. to 5:00 p.m., Monday through Friday. No construction shall occur on State holidays (e.g., Thanksgiving, Labor Day). Construction equipment maintenance shall be limited to the same hours. Non-noise generating construction activities are not subject to these restrictions. b) At least three signs listing these restrictions shall be provided by the construction contractor and posted on-site.	These requirements shall be noted in plan specifications. The County RE shall perform periodic site inspections to ensure compliance with these requirements.	Plans shall be reviewed for consistency with these requirements by the County RE prior to construction. Implementation shall occur prior to and during construction.	County RE
Public Facilities				
PF/mm-1	Demolition and excess construction materials shall be separated on-site for reuse or proper disposal. During demolition and construction activities, separate bins for recycling of construction materials and brush shall be provided onsite.	These requirements shall be noted in plan specifications and printed on construction plans. The County RE shall perform periodic site inspections to ensure compliance with these requirements. The contractor shall provide receipts for recycled materials or for separate bins.	Materials shall be recycled as necessary during all construction activities.	County RE
PF/mm-2	To prevent construction trash from blowing off-site, covered receptacles shall be provided onsite. Waste shall be picked up weekly. Prior to the start of construction, the contractor shall designate and provide the name and phone number of a contact person responsible for monitoring trash and organizing a clean-up crew. Additional covered receptacles shall be provided as determined necessary by County staff.	These requirements shall be noted in plan specifications. The County RE shall perform periodic site inspections to ensure compliance with these requirements.	Trash control shall occur through all construction activities.	County RE
Transportation/Circulation				
TR/mm-1	The County shall prepare a Construction Timing, Access, and Circulation Plan, which would include measures to avoid impacts to vehicular, bicycle, and pedestrian traffic and parking in the project area during construction activities. Feasible measures would likely include the use of directional signage, stop controls, detours, and safety railing, as necessary, to control bike traffic through or near any area that would be utilized by heavy equipment, construction workers, or materials. The plan shall be approved by the County RE prior to the start of construction.	These requirements shall be noted in plan specifications and the Construction Timing, Access and Circulation Plan shall be included with project plans. Plans shall be reviewed for consistency with these requirements and approved by the County RE prior to construction. The County RE shall perform periodic site inspections to ensure compliance with these requirements.	The Plan shall be approved by the County RE prior to construction. Compliance with the requirements of the plan shall be adhered to throughout all construction activities.	County RE
Water Resources/Flooding				

Goleta Beach Park Bridge Replacement Project Mitigation Monitoring and Reporting Program

Mitigation Measure	Requirements of Measure	Compliance Method	Verification Timing	Responsible Party
WR/mm-1	<p>The County shall prepare a Water Pollution Control Plan (WPCP), which shall include Best Management Practices (BMPs) to be implemented and monitoring prior to and during construction. The following BMPs shall be incorporated into the WPCP to minimize potential water quality impacts.</p> <p>a) All ground disturbance shall be limited to the dry season or periods when rainfall is not predicted, to minimize erosion and sediment transport to surface waters;</p> <p>b) Disturbed areas shall be stabilized or re-vegetated prior to the start of the rainy season;</p> <p>c) Impacts to vegetation within and adjacent to the Goleta Slough and storm drains shall be minimized. The work area shall be flagged to identify its limits. Vegetation shall not be removed or intentionally damaged beyond these limits.</p> <p>d) Construction materials and soil piles shall be placed in designated areas where they could not enter the Goleta Slough or storm drains due to spillage or erosion.</p> <p>e) Waste and debris generated during construction shall be stored in designated waste collection areas and containers away from watercourses, and shall be disposed of regularly.</p> <p>f) During construction, washing of concrete trucks, paint, equipment, or similar activities shall occur only in areas where polluted water and materials can be contained for subsequent removal from the site. Wash water shall not be discharged to the storm drains, street, drainage ditches, creeks, or wetlands. Concrete washout area shall be isolated from the Goleta Slough, wash water and waste shall be removed from project site. The location of the washout area shall be clearly noted at the construction site with signs.</p> <p>g) All fueling of heavy equipment shall occur in a designated area removed from the Goleta Slough and other drainages, such that any spillage would not enter surface waters. The designated refueling area shall include a drain pan or drop cloth and absorbent materials to clean up spills. The location of the fueling area shall be clearly noted at the construction site with signs.</p> <p>h) Vehicles and equipment shall be maintained properly to prevent leakage of hydrocarbons and coolant, and shall be examined for leaks on a daily basis. All maintenance shall occur in a designated offsite area. The designated area shall include a drain pan or drop cloth and absorbent materials to clean up spills.</p> <p>i) Any accidental spill of hydrocarbons or coolant that may occur on the construction site shall be cleaned immediately. Absorbent materials shall be maintained on the construction site for this purpose.</p> <p>j) Temporary placement of fill shall be located outside of any drainage ways.</p> <p>k) Adequate measures shall be applied to all disturbed portions of the project site to control dust, such as daily watering or hydro-mulching until vegetation cover is well established.</p> <p>l) Any fill or stockpiling that is to be left more than 30 days shall be hydro-seeded or covered immediately upon completion of the fill or stockpiling work.</p> <p>m) All fill material shall be "clean" and free of any potentially hazardous materials or hazardous waste.</p>	<p>These requirements shall be noted in plan specifications and the WPCP shall be included with project plans.</p> <p>Plans shall be reviewed for consistency with these requirements by the County RE prior to construction. The County RE shall perform periodic site inspections to ensure compliance with these requirements.</p>	<p>The plan requirements shall be adhered to through all construction activities.</p>	<p>County RE</p>