

CALENDAR ITEM
C18

MINUTE ITEM
This Calendar Item No. C18
was approved as Minute Item
No. 18 by the State Lands
Commission by a vote of 3
to 0 at its 7/6/95
meeting.

A 8

S 4

PRC 6902 WP 6902
D. Jones
07/06/95

GENERAL LEASE - RECREATIONAL AND
PROTECTIVE STRUCTURE USE

APPLICANT:

Gustav E. and Betty J. Ahlstrom
32946 South River Road
Clarksburg, California 95612-5043

LOCATION:

Tide and submerged land adjacent to APN 44-070-04 in the
Sacramento River, Yolo County.

EXHIBITS:

- A. Site Map
- B. Location Map

AB 884:

N/A

RECOMMENDED ACTION:

IT IS RECOMMENDED THAT THE COMMISSION:

CEQA FINDING:

FIND THAT THE ACTIVITY IS EXEMPT FROM THE REQUIREMENTS OF
THE CEQA PURSUANT TO 14 CAL. CODE REGS. 15061 AS
CATEGORICALLY EXEMPT PROJECTS, CLASS 1, EXISTING FACILITIES,
2 CAL. CODE REGS. 2905 (a) (2) (DOCK); AND CLASS 4, MINOR
ALTERATIONS TO LAND, 14 CAL. CODE REGS. 15304 (BANK
PROTECTION).

SIGNIFICANT LANDS

INVENTORY FINDING:

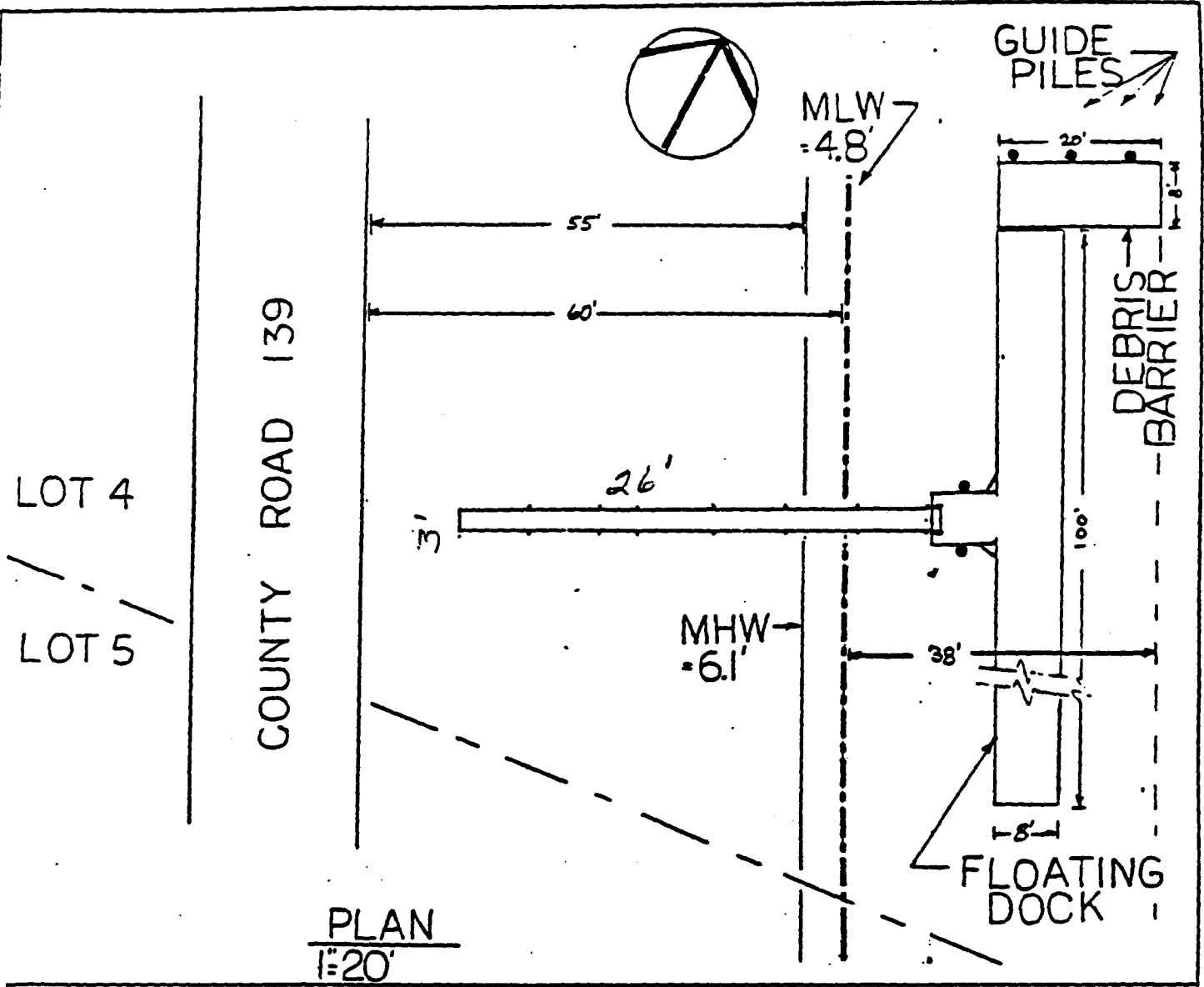
FIND THAT THIS ACTIVITY IS CONSISTENT WITH THE USE
CLASSIFICATION DESIGNATED FOR THE LAND PURSUANT TO P.R.C.
6370, ET SEQ.

CALENDAR ITEM NO. C18 (CONT'D)

AUTHORIZATION:

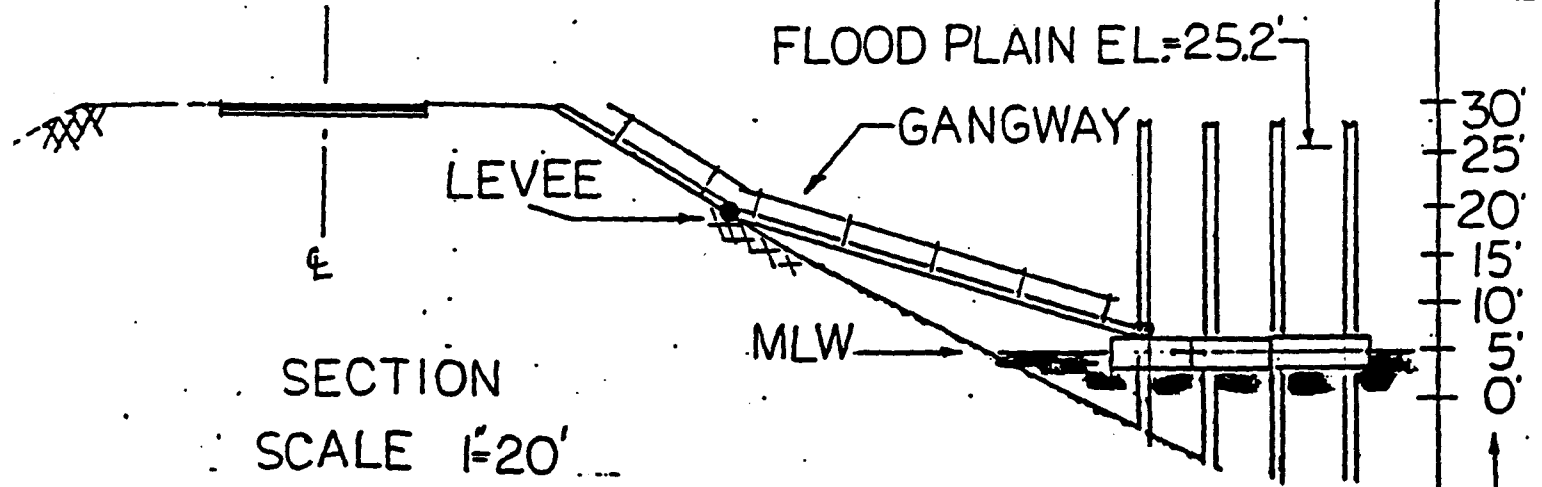
AUTHORIZE ISSUANCE TO GUSTAV E. AND BETTY J. AHLSTROM OF A TEN-YEAR GENERAL LEASE - RECREATIONAL AND PROTECTIVE STRUCTURE USE, BEGINNING OCTOBER 24, 1995; NO MONETARY CONSIDERATION FOR THE FLOATING BOAT DOCK, GANGWAY, AND DEBRIS BARRIER PURSUANT TO SECTION 6503.5 OF THE P.R.C. AND THE PUBLIC USE AND BENEFIT FOR THE MAINTENANCE OF EXISTING BANK PROTECTION, WITH THE STATE RESERVING THE RIGHT AT ANY TIME TO SET A MONETARY RENTAL IF THE COMMISSION FINDS SUCH ACTION TO BE IN THE STATE'S BEST INTEREST; PROVISION OF PUBLIC LIABILITY INSURANCE IN THE AMOUNT OF \$500,000 COMBINED SINGLE LIMIT; FOR AN 8 FT. X 100 FT. FLOATING BOAT DOCK, A 3 FT. X 16 FT. GANGWAY, AN 8 FT. X 20 FT. DEBRIS BARRIER, AND THE MAINTENANCE OF EXISTING BANK PROTECTION; ON THE LAND DESCRIBED ON EXHIBIT "A" ATTACHED AND BY REFERENCE MADE A PART HEREOF.

CALENDAR PAGE	70
MINUTE PAGE	951



PLAN
1"=20'

SACRAMENTO RIVER
 1 feet in width around the entire dock and walkway. Excepting therefrom any portion lying above the ordinary high water mark.

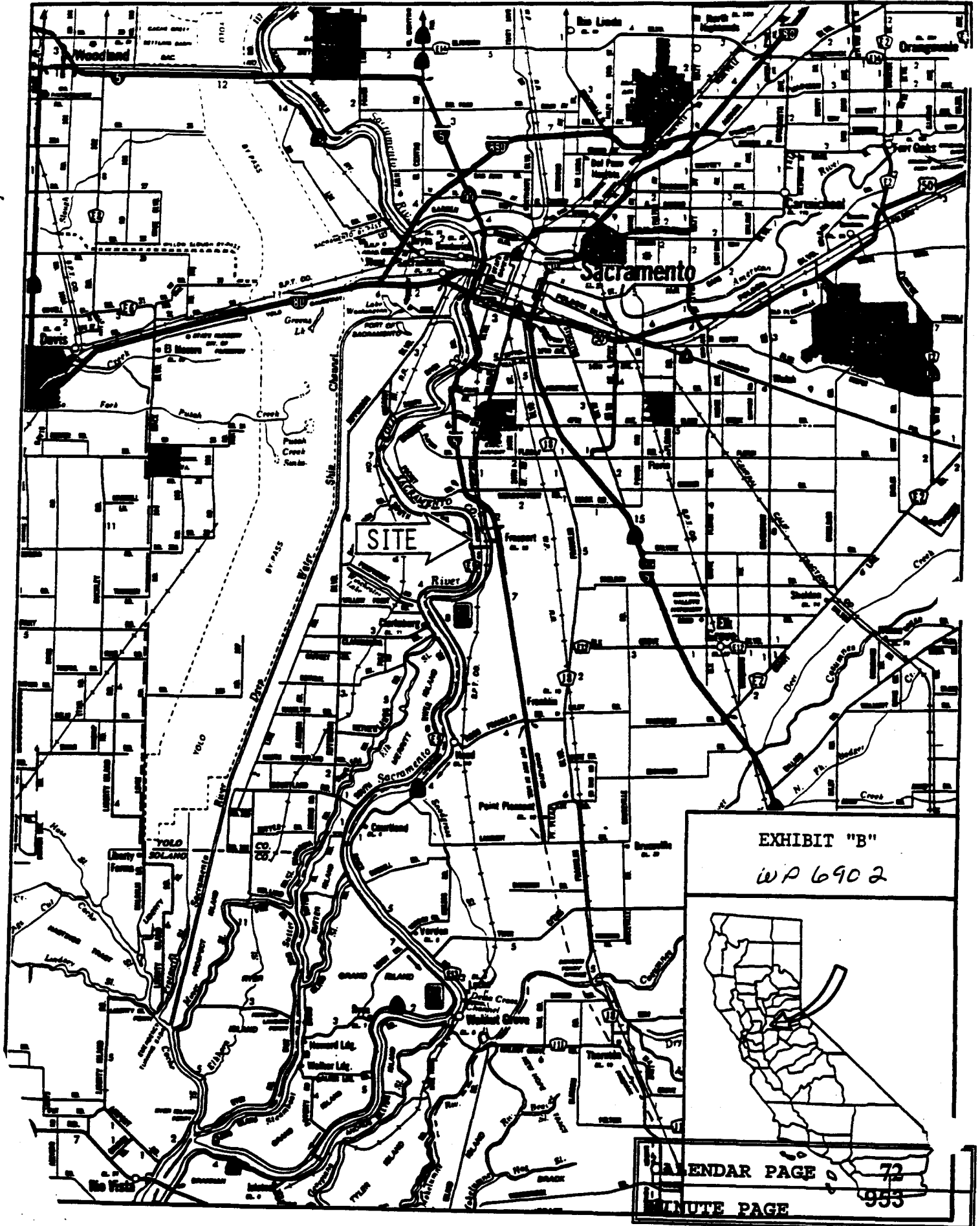


SECTION
SCALE 1"=20'

NOT A PERMIT

Concept Marine

AHLSTROM PRIVATE DOCK	CALENDAR PAGE	71
WP. 690	MINUTE PAGE	52
DATE 5/20/85 BY SJP	JOB #	U.S.G.S. EL.



SITE

EXHIBIT "B"

WP 6902

CALENDAR PAGE

72

MINUTE PAGE

953