

CALENDAR ITEM
C12

MINUTE ITEM
This Calendar Item No. C12
was approved as Minute Item
No. 12 by the State Lands
Commission by a vote of 3
to 0 at its 3/1/95
meeting. 03/01/95
PRC 6908.1
Grimmett

A 37
S 19

RENT REVIEW
GENERAL LEASE - INDUSTRIAL USE

APPLICANT:

Southern California Edison Company
1305 E. Noble Avenue
Visalia, California 93292

LOCATION:

Tide and submerged land at Pebbly Beach, Santa Catalina
Island, Los Angeles County.

EXHIBIT:

A. Location Map

AB 884:

N/A

RECOMMENDED

ACTION:

IT IS RECOMMENDED THAT THE COMMISSION:

CEQA

FINDING:

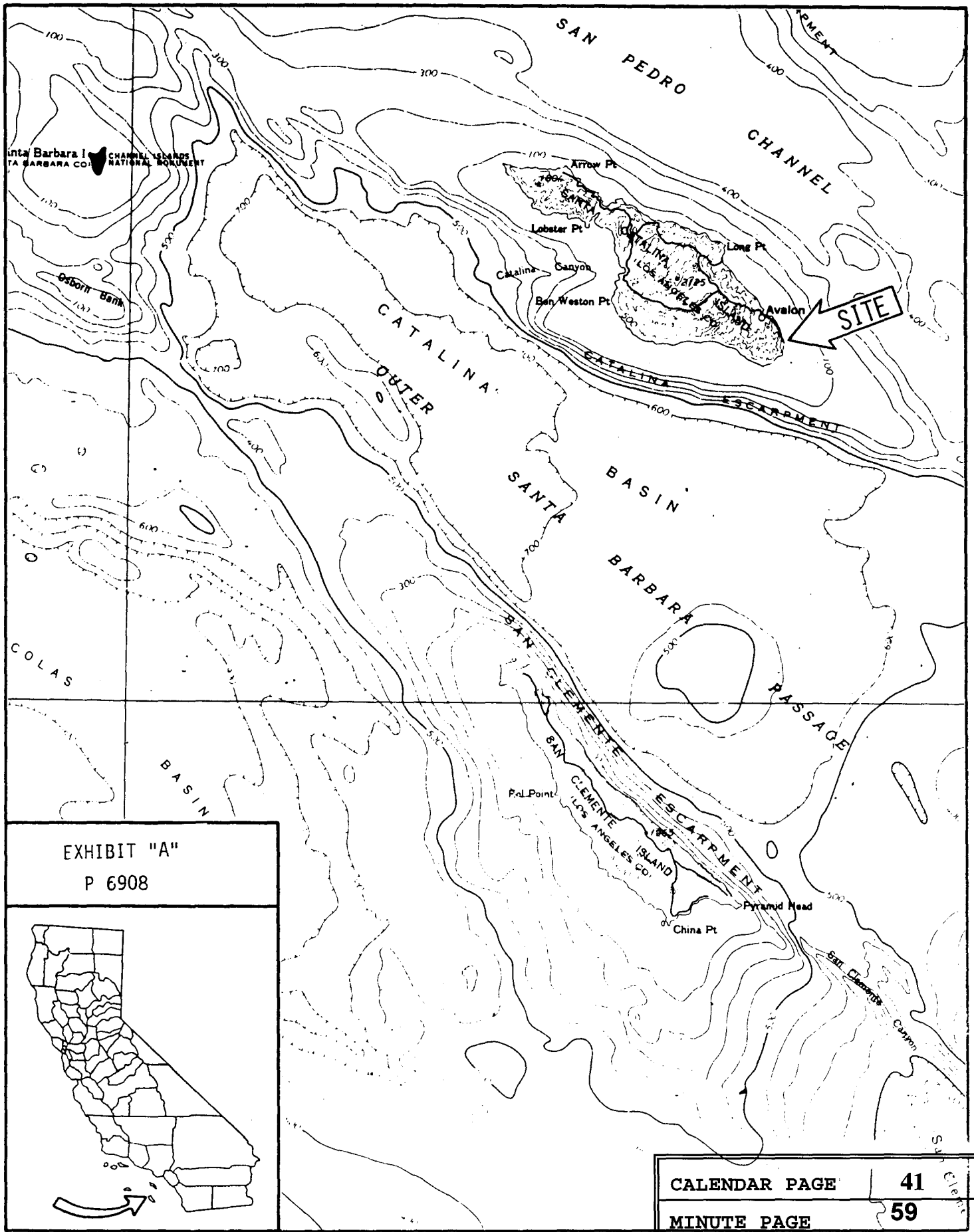
FIND THAT THE ACTIVITY IS EXEMPT FROM THE REQUIREMENTS OF
THE CEQA PURSUANT TO 14 CAL. CODE REGS. 15061 BECAUSE THE
ACTIVITY IS NOT A PROJECT AS DEFINED BY P.R.C. 21065 AND
14 CAL. CODE REGS. 15378.

AUTHORIZATION:

AUTHORIZE THE CHANGE IN ANNUAL RENTAL OF LEASE PRC 6908.1
FROM \$2,300 TO \$2,700, EFFECTIVE JANUARY 1, 1996.

CALENDAR PAGE 40

MINUTE PAGE 58



Santa Barbara Island Channel Islands National Monument
 Santa Barbara County

Osborn Bank

COLAS

BASIN



CALENDAR PAGE	41
MINUTE PAGE	59