

CALENDAR ITEM
C65

MINUTE ITEM
This Calendar Item No. C65
was approved as Minute Item
No. 65 by the State Lands
Commission by a vote of 3
to 0 at its 11/15/94
meeting.

S 2

GENERAL LEASE - PUBLIC AGENCY USE AND
APPROVAL OF RIGHT-OF-WAY MAP

11/15/94
W 24655
J. Ludlow
PRC 7798

APPLICANT:

California Department of Transportation
District 1
P.O. Box 3700
Eureka, California 95502-3700

LOCATION: An approximate 0.016-acre parcel of sovereign land located in the bed of Gasker Slough north of Point Arena, Mendocino County.

EXHIBITS: A: Vicinity and Site Map B. Location Map

AB 884:

05/31/95

RECOMMENDED ACTION:

IT IS RECOMMENDED THAT THE COMMISSION:

CEQA

FINDING: FIND THAT THE ACTIVITY IS EXEMPT FROM THE REQUIREMENTS OF THE CEQA PURSUANT TO 14 CAL. CODE REGS. 15061 AS A CATEGORICALLY EXEMPT PROJECT, CLASS 2, CAL. CODE REGS. 15302

SIGNIFICANT LANDS

INVENTORY FINDING:

FIND THAT THIS ACTIVITY IS CONSISTENT WITH THE USE CLASSIFICATION DESIGNATED FOR THE LAND PURSUANT TO P.R.C. 6370, ET SEQ.

AUTHORIZATION:

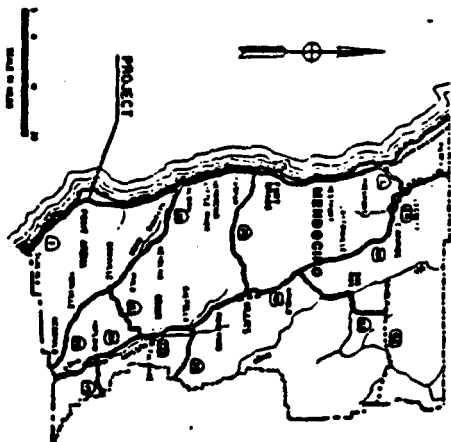
1. APPROVE THE MAP FILED BY THE CALIFORNIA DEPARTMENT OF TRANSPORTATION PURSUANT TO SECTION 101.5 OF THE STREETS AND HIGHWAYS CODE, AS SHOWN ON EXHIBIT "A" ATTACHED AND BY REFERENCE MADE A PART HEREOF.
2. AUTHORIZE THE ISSUANCE OF A PUBLIC AGENCY LEASE TO THE CALIFORNIA DEPARTMENT OF TRANSPORTATION, DISTRICT 1, FOR AN INDEFINITE PERIOD FROM THE DATE THE LEASE IS APPROVED BY THE STATE LANDS COMMISSION FOR HIGHWAY PURPOSES ON THE LAND DESCRIBED ON EXHIBIT "A" ATTACHED AND BY REFERENCE MADE A PART HEREOF.

CALENDAR PAGE 325

MINUTE PAGE

3933

EXHIBIT "A"
W 24655

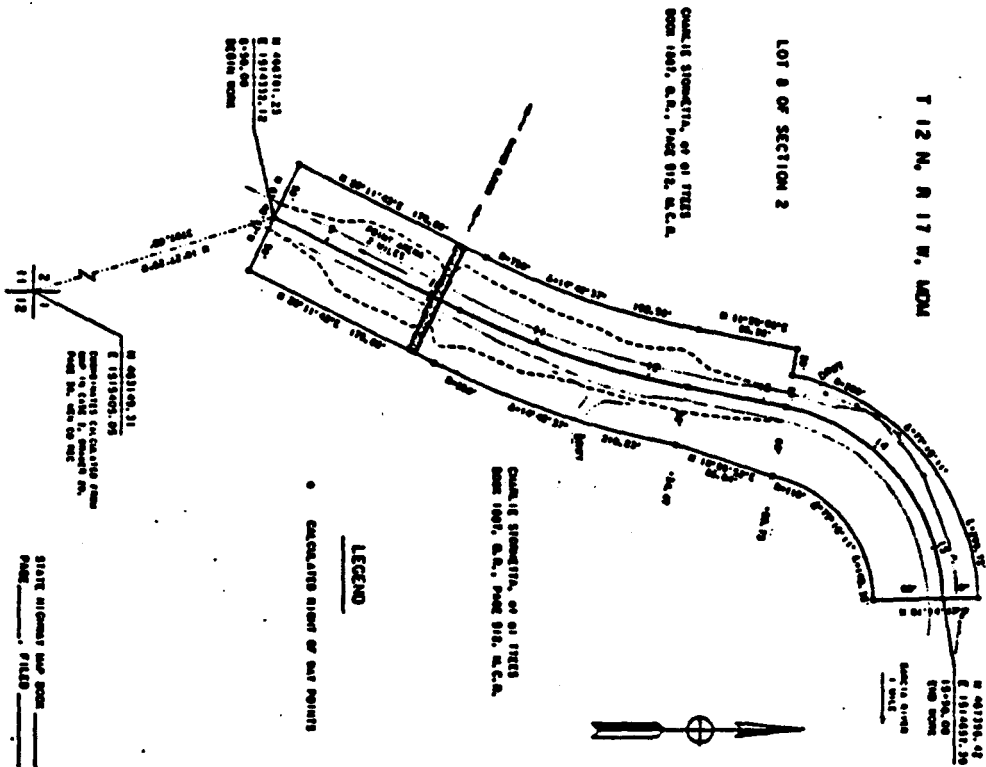


LOCATION MAP

STATE OF CALIFORNIA
STATE LANDS COMMISSION

THIS MAP IS HEREBY APPROVED AND FILED FOR RECORD WITH THE STATE LANDS COMMISSION PURSUANT TO THE PROVISIONS OF SECTION 4043 OF THE STATUTES AND MONMAY'S CODE. THE SOVEREIGN LANDS UNDER THE ADMINISTRATION OF THE STATE LANDS COMMISSION AS THEY MAY BE WITHIN THE MOAT OR GAY LINES SHOWN UPON THIS MAP ARE HEREBY RESERVED FOR HIGHWAY PURPOSES.

APPROVED: _____
 METRIC: _____
 STATE LANDS COMMISSION
 BY: _____
 CHIEF, DIVISION OF LAND
 MANAGEMENT AND CONSERVATION



LEGEND

• CALCULATED ALIGNMENT OF GAY POINTS



BEARINGS AND DISTANCES SHOWN ARE ON THE CALIFORNIA COORDINATE SYSTEM OF 1927, ZONE 2. MULTIPLE DISTANCES OF 17,000 FEET TO ADJUST GROUND DISTANCES.

STATE OF CALIFORNIA
 BUSINESS, TRANSPORTATION AND HOUSING AGENCY
 DEPARTMENT OF TRANSPORTATION
 MAP SHOWING SOVEREIGN LANDS OF THE STATE OF CALIFORNIA IN MENDOCINO COUNTY AT CASSER SLOAN, WEEDS FOR THE PROJECTION OF A STATE HIGHWAY, ROAD 8-100-1, P.M. (I.A. 750) 1
 SCALE: P = 30'

DATE	COUNTY	BOOK	PAGE	FILE NO.
Prepared by Edward A. Siler LAND SURVEYOR No. 10000 Mendocino County, California				
8-27-93 Filed for Record with State Lands Commission				

CALENDAR PAGE	326
MINUTE PAGE	3934

