

CALENDAR ITEM

C27

MINUTE ITEM
This Calendar Item No. C27
was approved as Minute Item
No. 27 by the State Lands
Commission by a vote of 3
to 0 at its 4/6/94
meeting.

A 4
S 2

04/06/94
W 24951
J. Ludlow
PRC 7761

GENERAL LEASE - PUBLIC AGENCY USE AND
APPROVAL OF RIGHT-OF-WAY MAP

APPLICANT:

California Department of Transportation
District 1
P.O. Box 3700
Eureka, California 95502-3700

LOCATION:

An approximate 0.767-acre parcel of sovereign land
located in the bed of Cache Creek at Lower Lake, Clear
Lake, Lake County.

EXHIBIT: A. Vicinity and Site Map

AB 884: 09/27/94

RECOMMENDED

ACTION:

IT IS RECOMMENDED THAT THE COMMISSION:

CEQA

FINDING:

FIND THAT A NEGATIVE DECLARATION CONTAINING MITIGATION
MEASURES, (STATE CLEARINGHOUSE NO. 83102217) WAS
PREPARED FOR THIS PROJECT BY THE CALIFORNIA STATE
DEPARTMENT OF TRANSPORTATION AND THAT THE COMMISSION
HAS REVIEWED AND CONSIDERED THE INFORMATION CONTAINED
THEREIN.

SIGNIFICANT LANDS

INVENTORY

FINDING:

FIND THAT THIS ACTIVITY IS CONSISTENT WITH THE USE
CLASSIFICATION DESIGNATED FOR THE LAND PURSUANT TO
P.R.C. 6370, ET SEQ.

CALENDAR PAGE	228
MINUTE PAGE	1125

AUTHORIZATION:

1. APPROVE THE MAP FILED BY THE CALIFORNIA DEPARTMENT OF TRANSPORTATION PURSUANT TO SECTION 101.5 OF THE STREETS AND HIGHWAYS CODE, AS SHOWN ON EXHIBIT "A" ATTACHED AND BY REFERENCE MADE A PART HEREOF.

2. AUTHORIZE THE ISSUANCE OF A GENERAL LEASE - PUBLIC AGENCY USE, INCORPORATING THEREIN THE MITIGATION MEASURES WITHIN THE ABOVE CITED NEGATIVE DECLARATION, TO THE CALIFORNIA DEPARTMENT OF TRANSPORTATION, DISTRICT 1, FOR AN INDEFINITE PERIOD FROM THE DATE THE LEASE IS APPROVED BY THE STATE LANDS COMMISSION FOR HIGHWAY PURPOSES ON THE LAND DESCRIBED ON EXHIBIT "A" ATTACHED AND BY REFERENCE MADE A PART HEREOF.

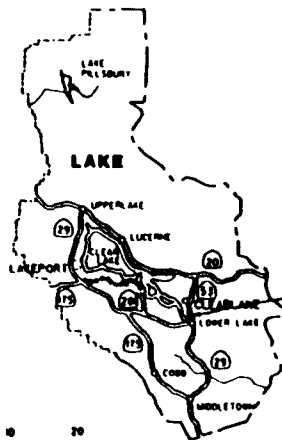
CALENDAR PAGE	229
MINUTE PAGE	1126

EXHIBIT "A"

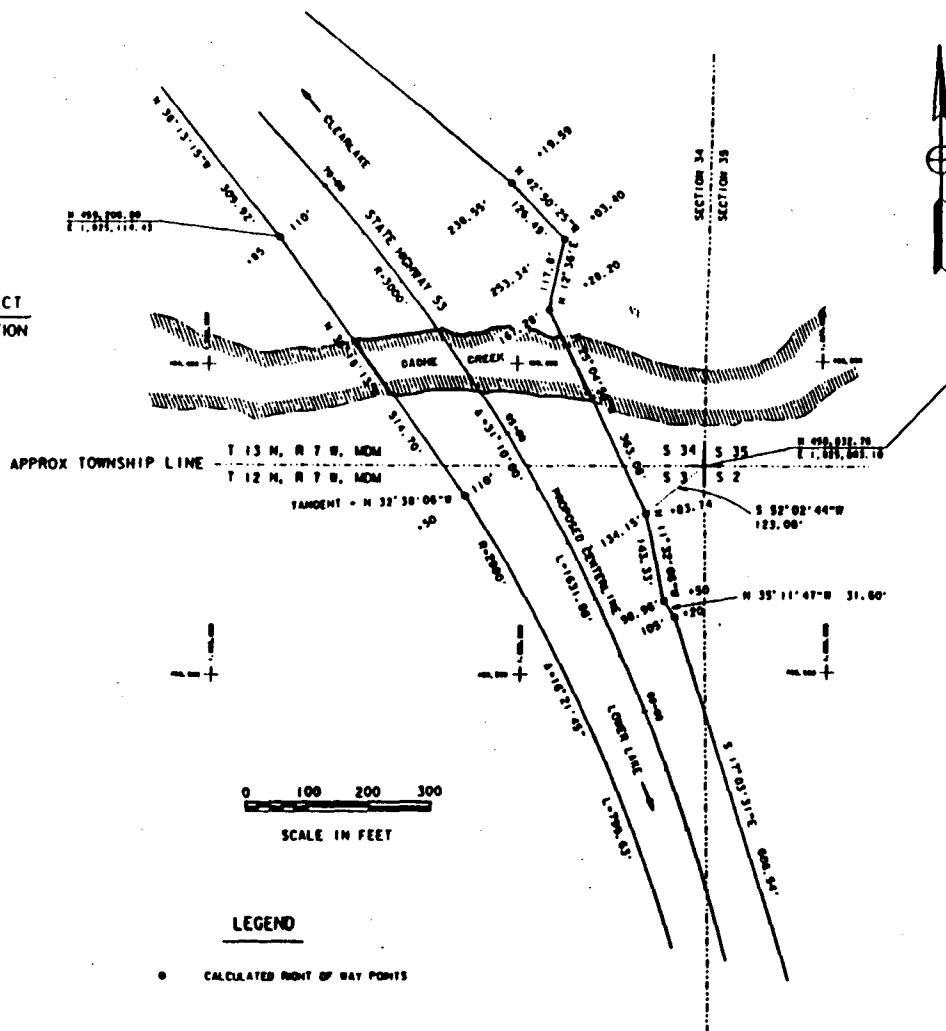
W 24951

DIST	COUNTY	ROUTE	PREP. DATE	TOTAL PROJECT	SHEET NO.	TOTAL SHEETS
01	LAKE	53	8.6.93		1	1

Edward J. Hill
 LAND SURVEYOR
 12-29-93
 PLANS APPROVAL DATE

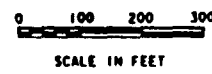


LOCATION MAP



FROM THE TOP OF A 1-DIAM POST PER 1 S.W. CORNER BURIED IN GILT AND DISTURBED. I COULD NOT DIG TO EXPOSE THE ROCK BOUND. I ESTABLISHED THE POSITION BY USING DIRECT TIES MADE BY CALTRANS IN 1993. NO BEARINGS THERE WERE FOUND.

BEARINGS AND DISTANCES SHOWN ARE ON THE CALIFORNIA COORDINATE SYSTEM OF 1927, ZONE 2. MULTIPLY DISTANCES BY 1.0001535 TO OBTAIN GROUND DISTANCES.



LEGEND
 ● CALCULATED RIGHT OF WAY POINTS

STATE HIGHWAY MAP BOOK _____
 PAGE _____ FILED _____

**STATE OF CALIFORNIA
 STATE LANDS COMMISSION**

THIS MAP IS HEREBY APPROVED AND FILED FOR RECORD WITH THE STATE LANDS COMMISSION PURSUANT TO THE PROVISIONS OF SECTION 104.5 OF THE STREETS AND HIGHWAYS CODE, THE SOVEREIGN LANDS UNDER THE JURISDICTION OF THE STATE LANDS COMMISSION AS THEY MAY LIE WITHIN THE RIGHT OF WAY LINES SHOWN ON THIS MAP ARE HEREBY RESERVED FOR HIGHWAY PURPOSES.

CHEF, DIVISION OF LAND
 MANAGEMENT AND CONSERVATION

**STATE OF CALIFORNIA
 BUSINESS, TRANSPORTATION AND HOUSING AGENCY
 DEPARTMENT OF TRANSPORTATION**

MAP SHOWING SOVEREIGN LANDS OF THE STATE OF CALIFORNIA IN LAKE COUNTY, NEEDED FOR THE PROTECTION OF A STATE HIGHWAY, ROAD 01-LAK-53-P.M. 1.07.FAP 53

SCALE: 1" = 100'

MINUTE PAGE 1127
 CALENDAR PAGE 230